

Needle valves are designed especially for corrosive and dangerous environments. These valves can be used in the process control, instrumentation and flow control application. It is designed with maximum efficiency in order to provide high quality and low cost in various liquid and gas control system.

Test pressure : x 1,5

Standard;

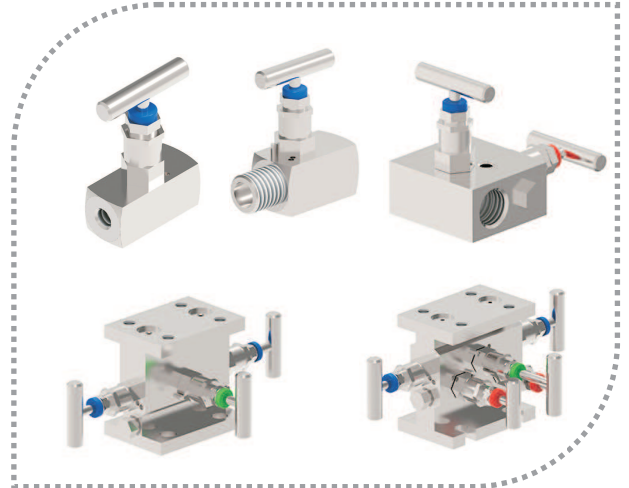
Design: ASME B16.34

Wall Thickness: ASME B16.34

Pipe Thread: ASME B1.20.1.B521

DIN 2999 / 259 , ISO228/1 , JIS.B 0203 , ISO7/1

Inspection & Testing: M55 SP-110, EN12266

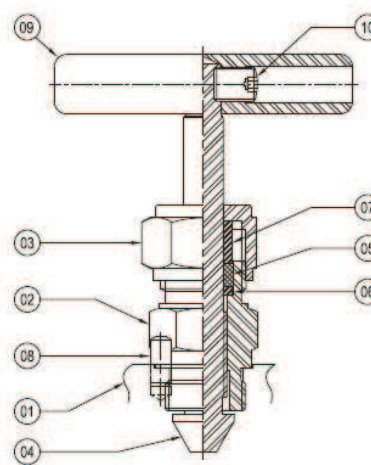


ELX NEEDLE VALVE

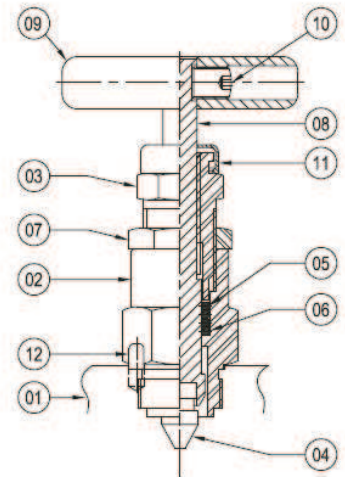
- ELX- FF , ELX- MF
- ELX- 2FF , ELX- 2MF
- ELX- 3FF , ELX- 3FF-H
- ELX- 5FF , ELX- 5FF-H

Advantages :

- * Complete Stainless Steel
- * Weldness Single Part Body
- * Max. 690 bar
- * Max. 400 °C



Single Bonnet Assembly
(3/4" and above sizes)

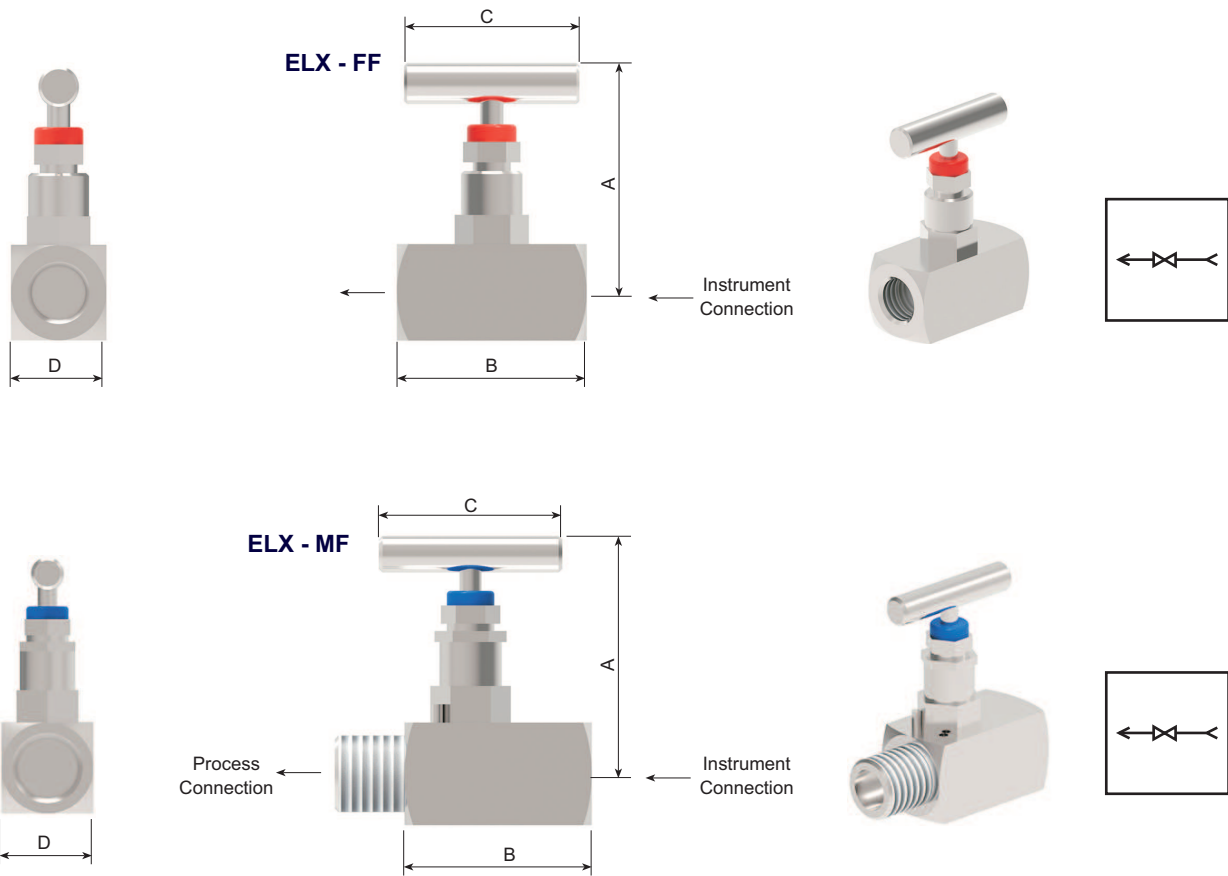


Double Bonnet Assembly
(upto 1/2" sizes)

No.	Description	Qty.
1.	Body SS 316	1
2.	Bonnet SS 316	1
3.	Gland Nut SS 316	1
4.	Spindle Tip 17.4 PH	1
5.	Packing Teflon	2
6.	Steel Ring SS 316	1
7.	Steel Bush SS 316	1
8.	Stopper Pin SS	1
9.	Handle SS	1
10.	Grub Screw CS	1

No.	Description	Qty.
1.	Body SS 316	1
2.	Bonnet SS 316	1
3.	Adj. Bonnet SS 316	1
4.	Spindle Tip 17.4 PH	1
5.	Packing Teflon	2
6.	"930" 94 Ring Viton*	2
7.	Check Nut SS 316	1
8.	Spindle SS 316	1
9.	Handle SS	1
10.	Grub Screw CS	1
11.	Dust Cap Nylon	1
12.	Stopper Pin SS	1

Two Way Valve :

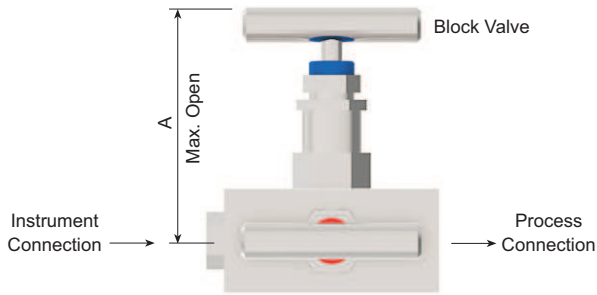


Model	Dim.	CONNECTION G / NPT								
		1/8"	1/4"	3/8"	1/2"	3/4"	1"	1 1/4"	1 1/2"	2"
ELX - FF	A	65	70	75	85	96	100	120	130	150
	B	50	50	55	65	75	85	90	110	110
	C	45	45	45	55	65	65	75	75	85
	Orifice	3	4	4	4,9	6,5	9	11,9	11,9	14
	Cv	0,24	0,35	0,35	0,65	0,86	1,78	2,4	2,4	3,1

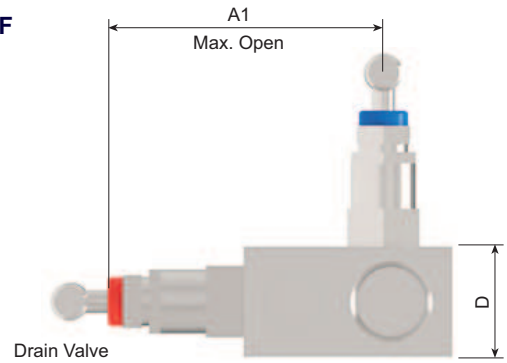
Model	Dim.	CONNECTION G / NPT								
		1/8"	1/4"	3/8"	1/2"	3/4"	1"	1 1/4"	1 1/2"	2"
ELX -MF	A	65	70	75	85	96	100	120	130	150
	B	55	55	60	70	80	90	95	115	120
	C	45	45	45	55	65	65	75	75	85
	Orifice	3	4	4	4,9	6,5	9	11,9	11,9	14
	Cv	0,24	0,35	0,35	0,65	0,86	1,78	2,4	2,4	3,1

All dimensions are stated as mm.

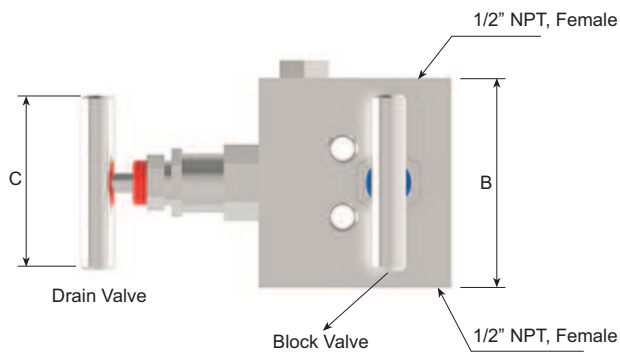
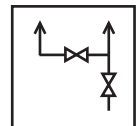
Two Way Valve :



ELX - 2FF

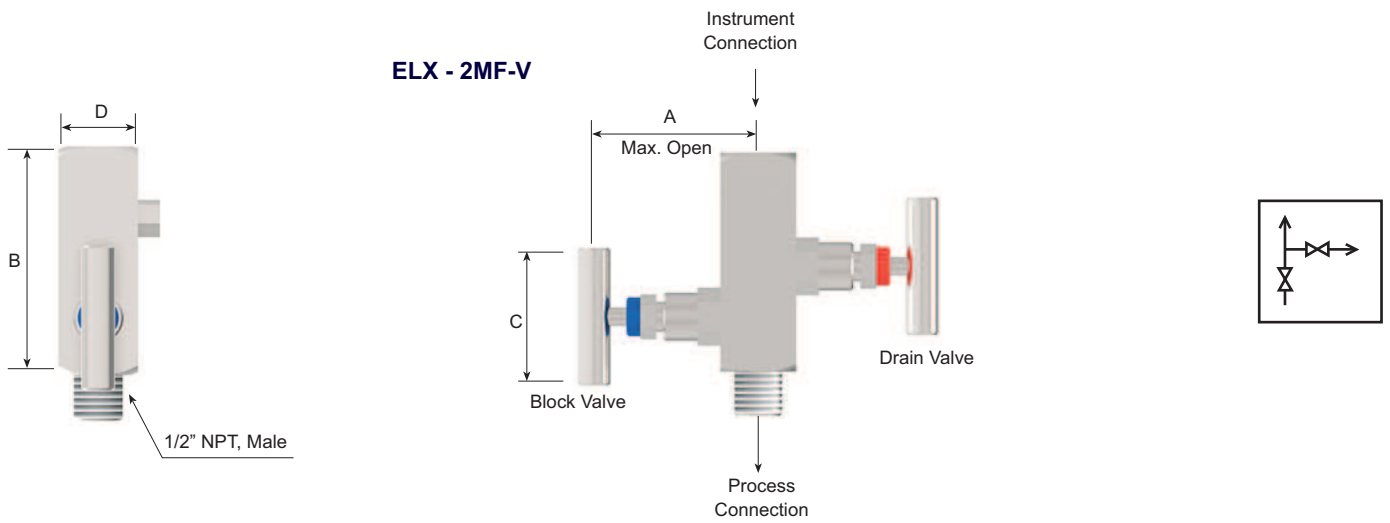


Model	DIM.	CONNECTION G / NPT
		2 x 1/2" NPT
ELX - 2FF	A	45
	A1	103
	B	63,5
	C	55
	D	28,5

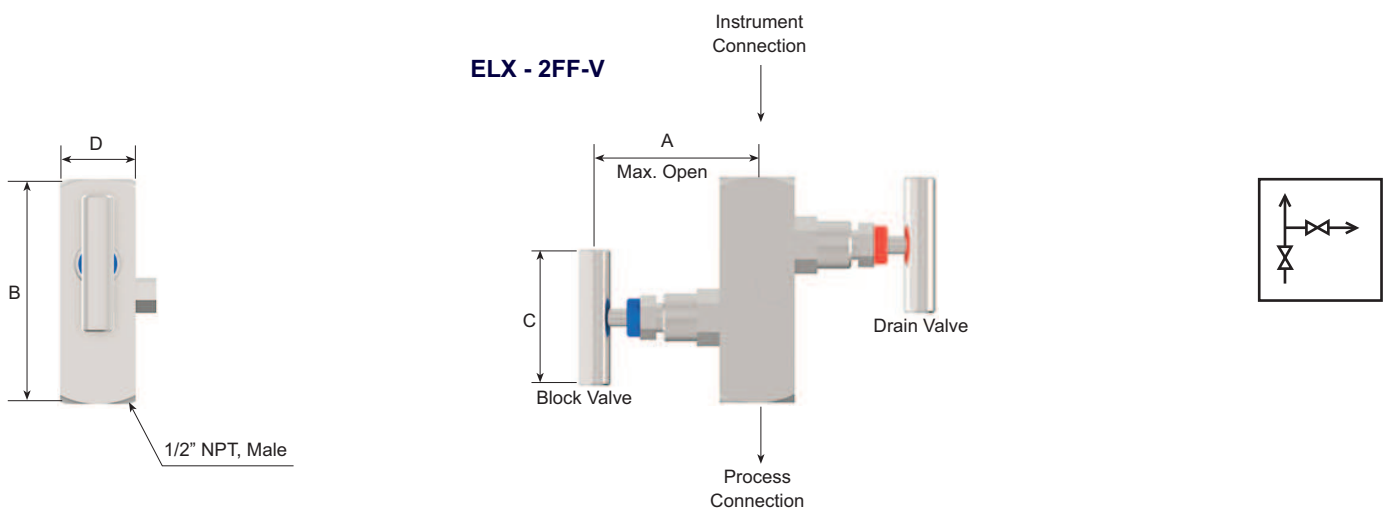
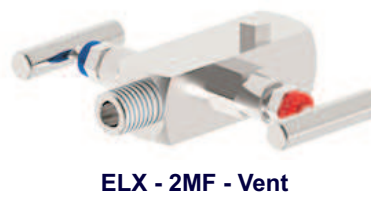


All dimensions are stated as mm.

Two Way Valve :

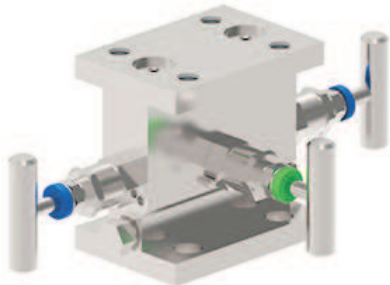


Model	DIM.	CONNECTION G / NPT 2 x 1/2" NPT	
		G	NPT
ELX - 2MF-V	A	79	79
ELX - 2FF-V	B	63,5	63,5
	C	45	45
	D	28,5	28,5

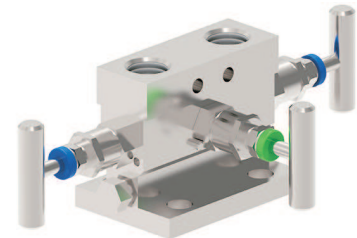


All dimensions are stated as mm.

Three Way Valve :

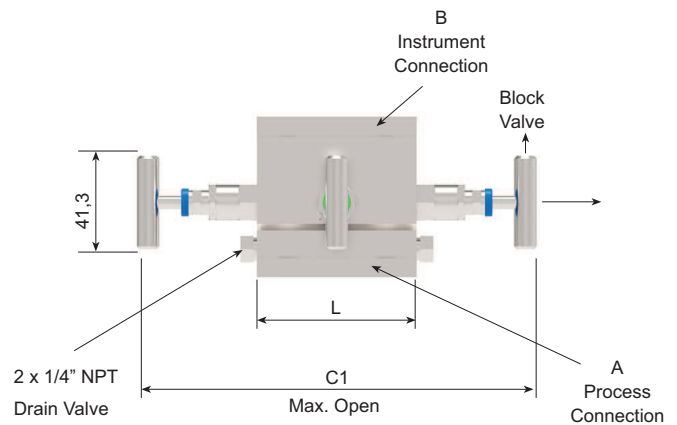
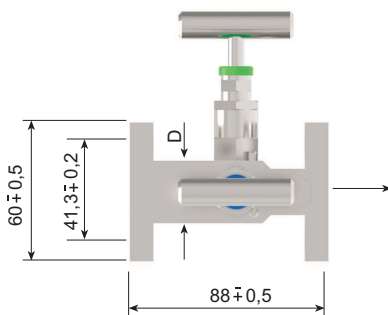
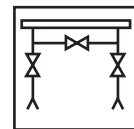
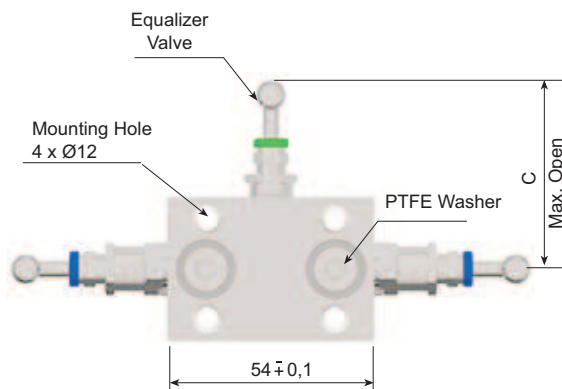


**Double Direction Flanged
ELX - 3FF - H**



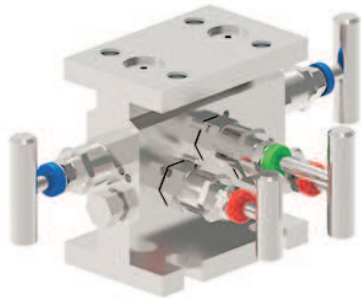
**Single Direction Flanged
ELX - 3FF**

Model	CONNECTION					
	Input	Output	C	C1	D	L
ELX - 3FF	2x1/2" NPT	2x1/2" NPT	90	226	32	70
ELX - 3FF - H	2x1/2" NPT	2x1/2" NPT	90	226	32	95

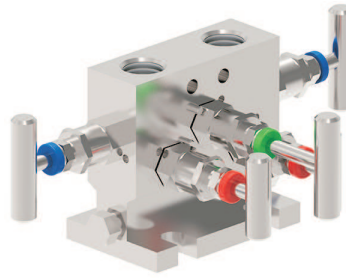


All dimensions are stated as mm.

Five Way Valve :



Double Direction Flanged
ELX - 5FF - H

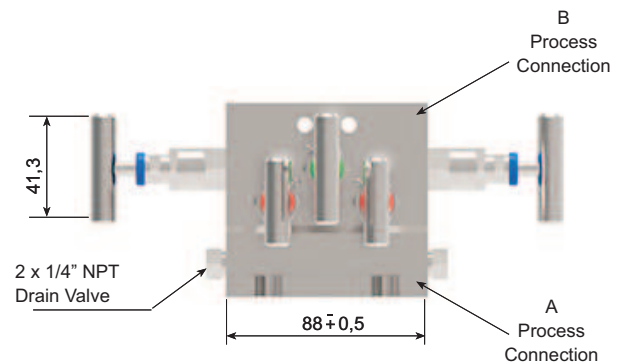
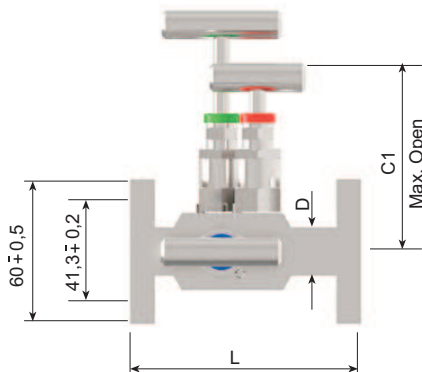
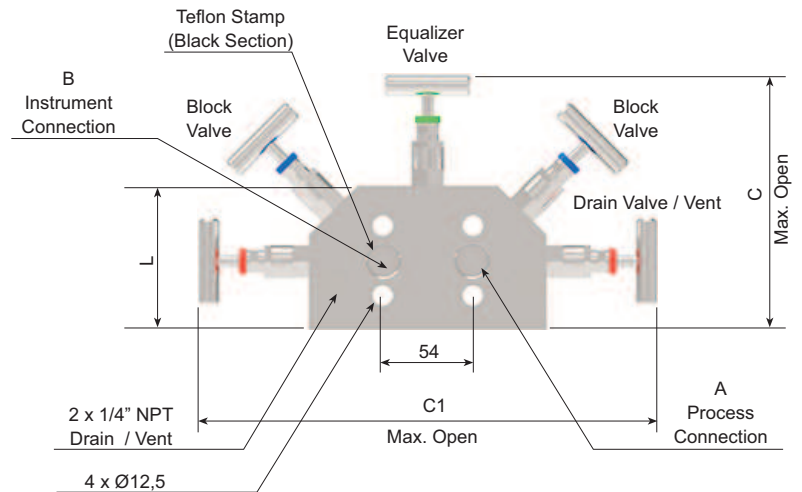
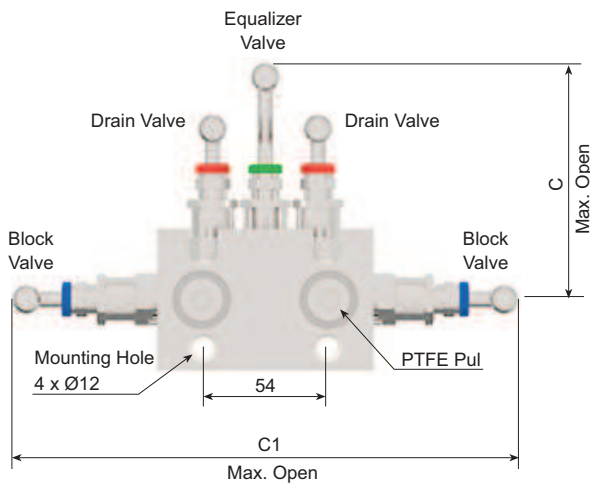
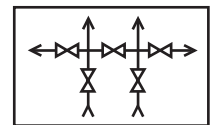


Double Direction Flanged
ELX - 5FF



Straight Body
ELX - 5FF - P

Model	CONNECTION					
	Input	Output	C	C1	D	L
ELX - 5FF	2x1/2" NPT	2x1/2" NPT	98	226	32	85
ELX - 5FF - H	2x1/2" NPT	2x1/2" NPT	98	226	32	110
ELX - 5FF - P	2x1/2" NPT	2x1/2" NPT	152	276	32	84



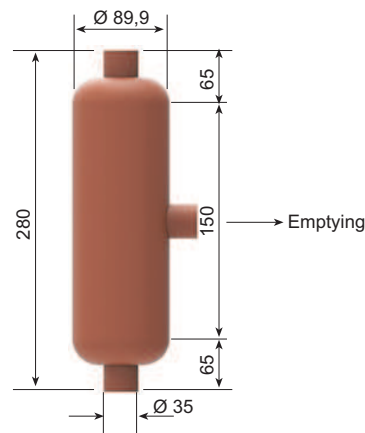
All dimensions are stated as mm.

Condensation Vessel :

Condensation vessels are used as buffer between process and instrument for measurement of high density and corrosive liquids and gases in a pipe line.

Most common areas of use are ; Steam pipe line and liquid pipe line over 150 °C. It condenses and lower the temperature of gas or liquid for helping the instrument for measurement.

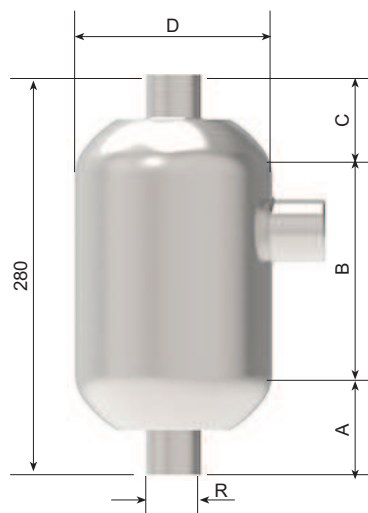
MODEL	ELX - 71
Type	Big
Material	Carbon Steel (A106.B)
Test Pressure	125 bar
Connection	3 x 1/2"



ELX - 71
Large Type



MODEL	ELX - 71
Type	Small
Material	316 Stainless Steel
Test Pressure	155 bar
Connection	3 x 1/2"



ELX - 72
Small Type

