

EDS Digital Display (two-wire electrical connection) is designed to be mounted on the pressure, differential pressure, flow, temperature and level transmitters. LCD Displays show, the value measured in the real-time and it will flash to alarm. The three button feature allows the user to program the zero, span, unit, decimal digits, damping and alarm point.



# EDS UNIVERSAL DIGITAL DISPLAY

**EDS 01 , EDS 02**

### Advantages :

- New Design
- Easy Friendly Software
- 5 Digit LCD Display

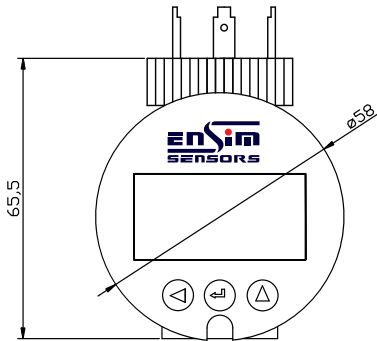


### Specifications :

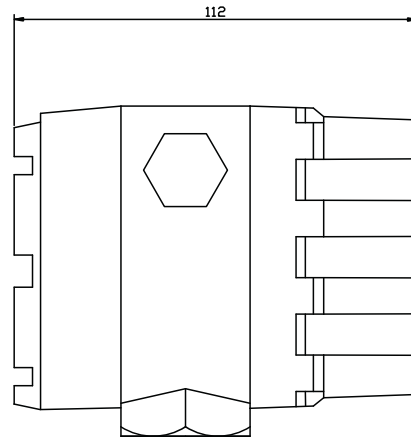
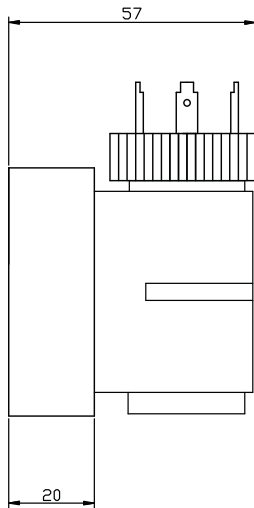
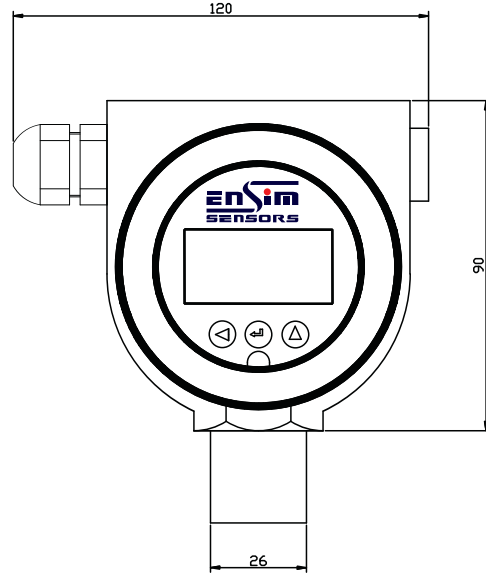
|                                 |   |
|---------------------------------|---|
| Output                          | 4-20 mA Two Wire  |
| Power Supply                    | 24 VDC , (Supplied by current loop)                         |
| Output                          | Two independent PNP   |
| Switching Performance           | Max. 120 mA , Short circuit protection                      |
| Switching Frequency             | Max. 10 Hz.   |
| Delay Time                      | 0-255 ms  |
| Switching Cycle                 | >100x10 <sup>6</sup>  |
| Repeatability                   | ≤ ±0,1 % Full Scale   |
| Electrical Protection           | IP 65 , Reverse polarity protection                         |
| Display                         | Double 5 digit / 8 digit<br>7 segment / 16 segment LCD      |
| Scale Range                     | (-) 19999 ... (+) 99999                                     |
| Accuracy                        | % 0,1 ± 1 digit   |
| Material of Housing             | PA 6.6 , Polycarbonate<br>Opt. Aluminum Double Cell Housing |
| Mechanical Stablite             | Vibration: 59 RMS ( 20-200 Hz)<br>Anti- Shock : 100g / 11ms |
| Working and Ambient Temperature | (-) 25 ... (+) 80 C   |
| Ambient Humidity                | % 20 ... 80 RH  |

Dimension:

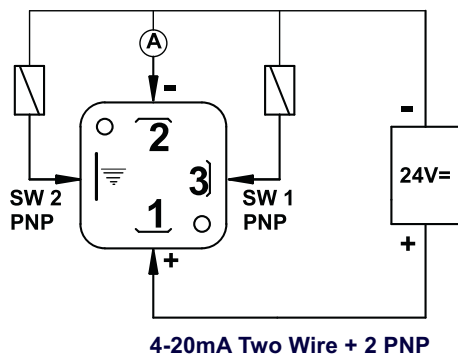
**EDS 01**



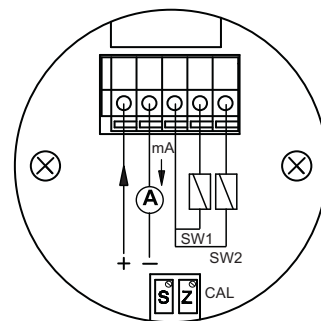
**EDS 02**



Electrical connection :



**EDS 01**



**EDS 02**

**EDS 02**